

Biotinylated Human SCF Protein; His-Avi Tag

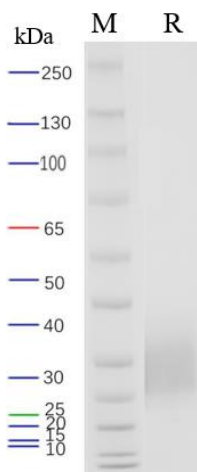
Product Information

Product Name	Biotinylated Human SCF Protein; His-Avi Tag
Storage temp.	Store at $\leq -70^{\circ}\text{C}$, stable for 6 months after receipt. Recommend to aliquot the protein into smaller quantities for optimal storage. Please minimize freeze-thaw cycles.
Catalog# / Size	GM-87652RP-25 / 25 μg GM-87652RP-200 / 200 μg

Protein Information

Alternative Names	KITLG,FPH2,KL-1,Kitl,MGF,SCF,SF,SHEP7,KL
Source	Biotinylated Human SCF Protein; His-Avi Tag (GM-87652RP) is expressed from human 293 cells (HEK-293). It contains AA Glu 26 - Ala 190 (Accession # P21583-1). This protein carries a His-Avi tag at the C-terminus.
Purity	> 95% as determined by SDS-PAGE
Endotoxin	< 1 EU/ μg , determined by LAL gel clotting assay
Predicted Mol Mass	20.7 KDa
Formulation	Supplied as a 0.2 μm filtered solution of PBS, pH7.4.
Description	SCF protein (Stem Cell Factor), also known as Kit Ligand-1 (KL-1), is a multifunctional cytokine protein that plays an important role in biological processes such as cell proliferation, differentiation, and survival. The SCF protein primarily exerts its effects by binding to its receptor c-Kit. c-Kit is a tyrosine kinase receptor that is widely expressed in various cell types. The binding of SCF to c-Kit activates multiple signaling pathways, including PI3K/Akt, MAPK, STAT, etc., thereby regulating cell growth, proliferation, and differentiation. SCF protein plays a crucial role in the hematopoietic system, particularly in the proliferation and differentiation of stem cells. In diseases, SCF protein also plays a significant role. Aberrant activation of the SCF/c-Kit signaling pathway may lead to the development of certain diseases, such as tumors. Therefore, SCF protein and its receptor c-Kit could potentially serve as therapeutic targets for certain diseases.

SDS-PAGE

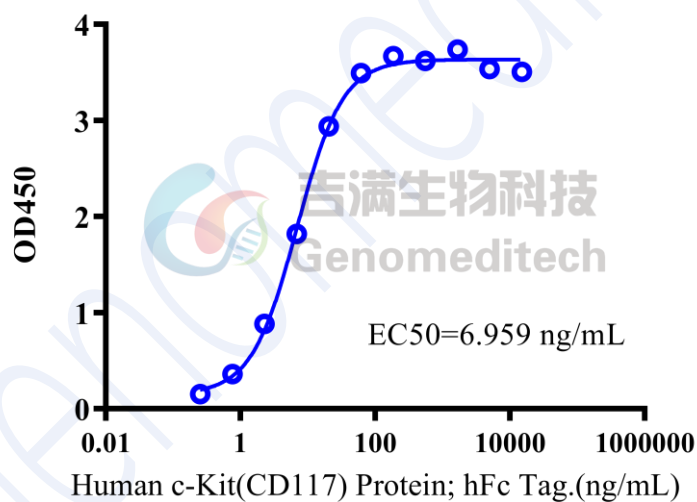


On SDS-PAGE under reducing (R) condition. The gel was stained overnight with Coomassie Blue. The purity of the protein is greater than 95%.

Bioactivity-ELISA

Bioactivity-ELISA

0.1 μ g Biotinylated Human SCF Protein; His-Avi Tag of per well



Biotinylated Human SCF Protein; His-Avi Tag (Catalog # GM-87652RP) was immobilized at 1 μ g/ml (100 μ L/well) on streptavidin precoated. Increasing concentrations of Human c-Kit(CD117) Protein; hFc Tag (Catalog # GM-87119RP) were added.